



Floor Planning Guidelines

Our Service

Floor plans are a great way of enhancing your property details. Most applicants express a preference to seeing floor plans as they provide an easy way to visualise a property and remember its details after a viewing. Floor plans also add value for Vendors who are more likely to instruct an agent who provides such as service.

Our service provides a fast, efficient and cost effective way to introduce professional floor plans to your web site and printed property brochures.

How Our Service Works

Step 1 – Making the sketch

You make a basic sketch of the property, which should include dimensions (metric or imperial), room names, staircases, location of windows, doors (note if they open in/out/left/right), fireplaces, bathroom fixtures, kitchen units and appliances. Basically the more information you provide the better!

Try to use our supplied template or graph paper when you sketch the plan – the sketch doesn't have to be to scale but it will help you keep the lines straight. Also use a soft pencil or black ink pen to ensure that your details are readable.

Step 2 – Send the sketch to us

You can fax, post or email your sketches to us. Please include a purchase order number on your plan with your details and a contact name and telephone/email.

Step 3 – Production & first draft

We will turn your sketch into a professionally drawn plan within 2 working days (although we normally do this much faster within 1 working day!).

The plan will include all the details you have supplied plus we will automatically convert measurements between metric and imperial and include both within room descriptions. We can produce the plan with your corporate identity including fonts, colours, and watermarks if desired. We draw plans to a 1:100 scale and automatically crop them to make it easy for you to insert into your documents/web site.

Once drawn, we will email, fax, or post you a draft which you can amend if necessary and send back to us.

Step 4 – Final version

Once you are happy with the plan we will send you the final version in two formats – one for inclusion in printed material and one size optimised for inclusion on your web site.

The typical file formats we use are Windows Meta Files (.WMF) for print and Graphic Interchange Files (.GIF) for web sites. We can also supply plans in other formats including SVG, DWG, DXF, JPG, TIF, BMP etc.

Step 5 – Payment

We will raise an invoice per calendar month. This will take into account any discount for multiple orders.



Price List

Number of Bedrooms		Number of Floors	
1	£5.00	1	£5.00
2	£7.50	2	£10.00
3	£10.00	3	£15.00
4	£15.00	4	£20.00
5	£20.00	5	£25.00
6	£25.00		
7	£30.00		
8	£35.00		

Our price list provides a simple means for you to assess the potential costs of producing floor plans.

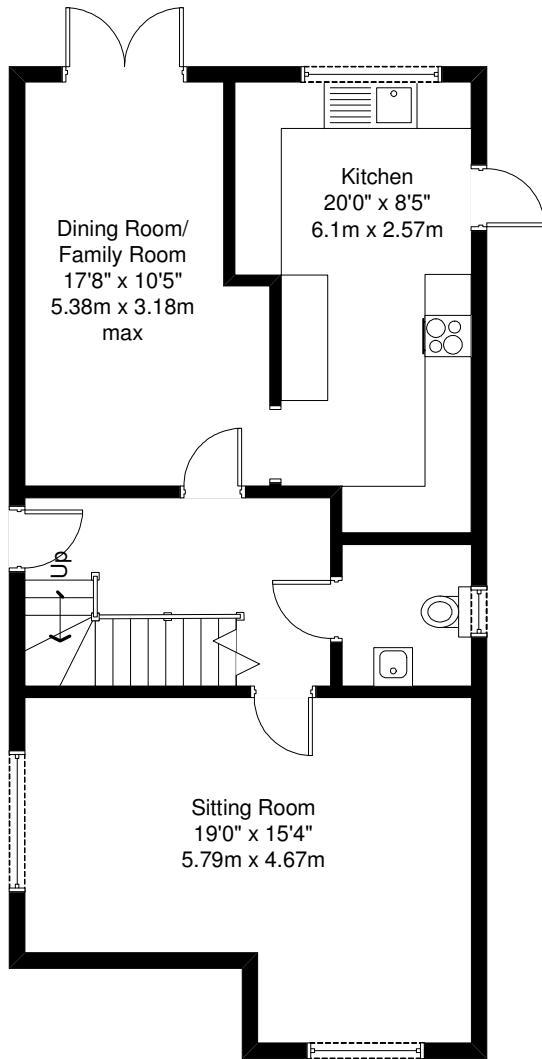
*We offer a 10% volume discount on all prices if 10 or more plans are ordered within a calendar month (e.g. 10 or more plans received between March 1st to March 31st).

Contacting Us

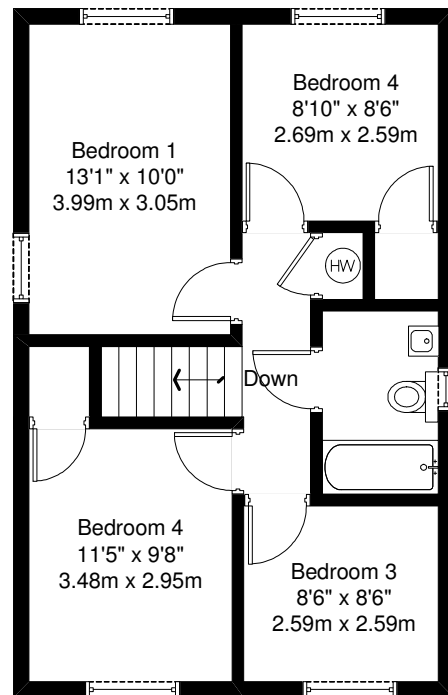
Address	Bright Logic Limited 23 St Martin's Street Wallingford Oxfordshire OX10 0AL
Telephone	01491 824800
Fax	0870 762 6276
Email	floorplans@brightlogic.co.uk
Web Sites	www.brightlogic.co.uk

For more information about our estate agency software and services please visit www.acquaintcrm.co.uk.

Sample #1



Ground Floor

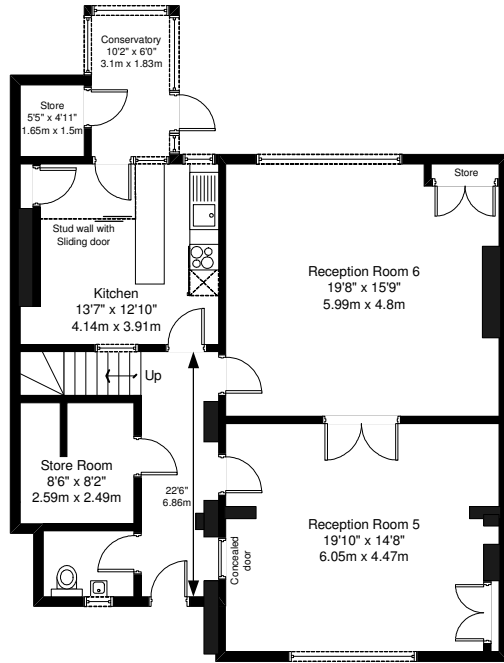


First Floor

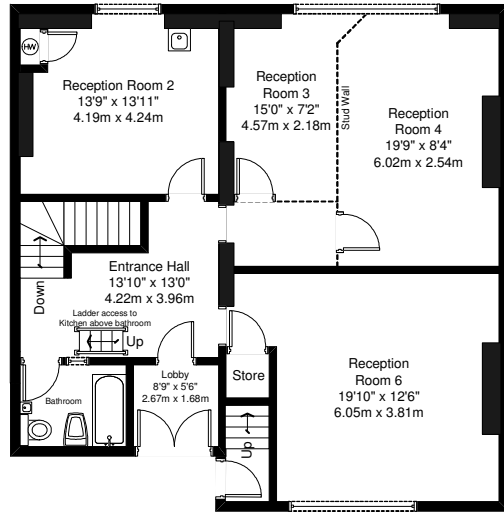
For illustrative purposes only. Not to scale

Whilst every attempt has been made to ensure the accuracy of the floor plan, all measurements are approximate and no responsibility is taken for any error, omission or misstatement. IMS Communications Ltd 0118 934 4666

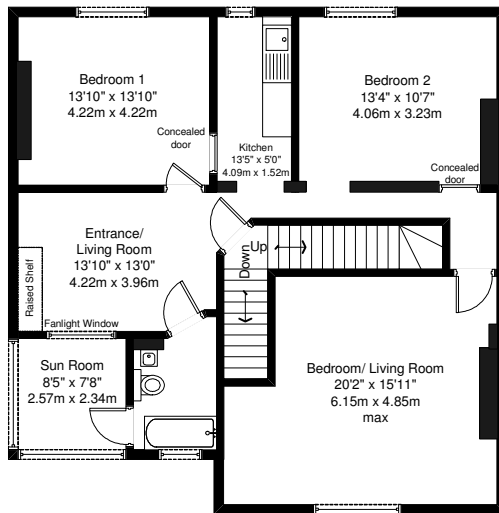
Sample #2



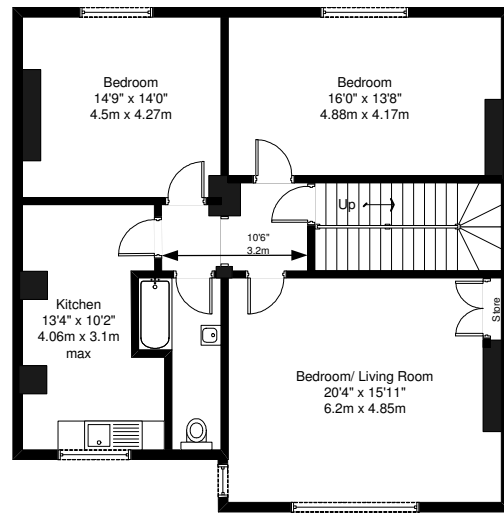
Lower Ground Floor



Hall Floor



First Floor



Second Floor

For illustrative purposes only. Not to scale

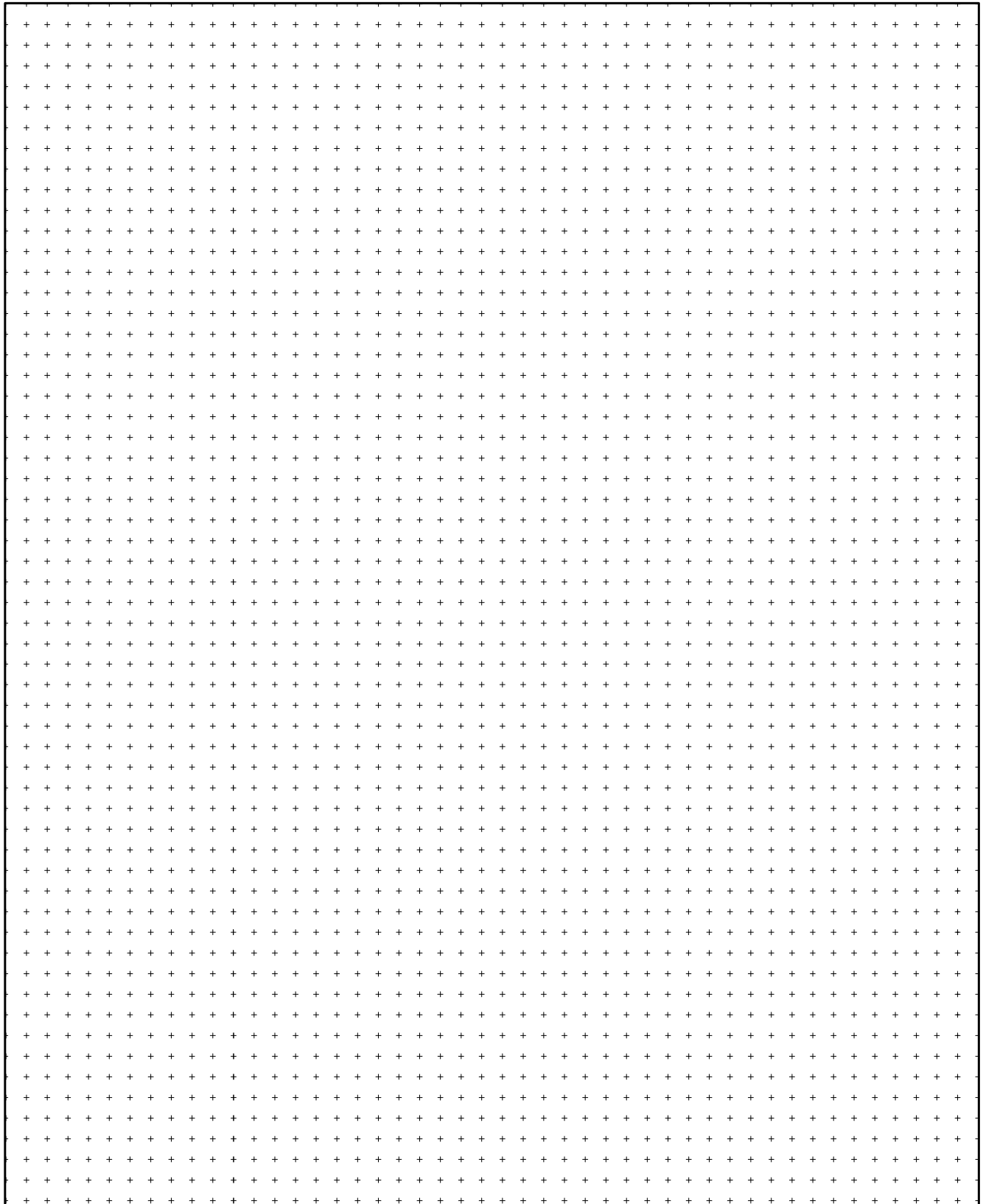
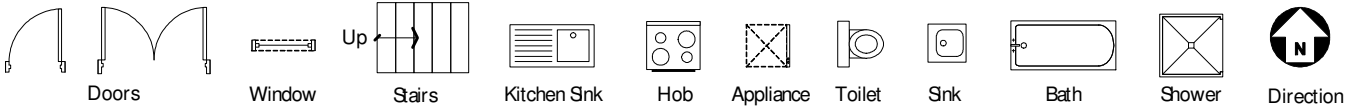
Whilst every attempt has been made to ensure the accuracy of the floor plan, all measurements are approximate and no responsibility is taken for any error, omission or misstatement. IMS Communications Ltd 0118 934 4666



Bright Logic Limited
23 St Martin's Street, Wallingford, OX10 0AL
Tel : 01491 824800
Email : floorplans@brightlogic.co.uk

FAX TO
0870 762 6276

Scale: 1 square = 1 ft



From:	
Tel:	
Email:	
PO No:	